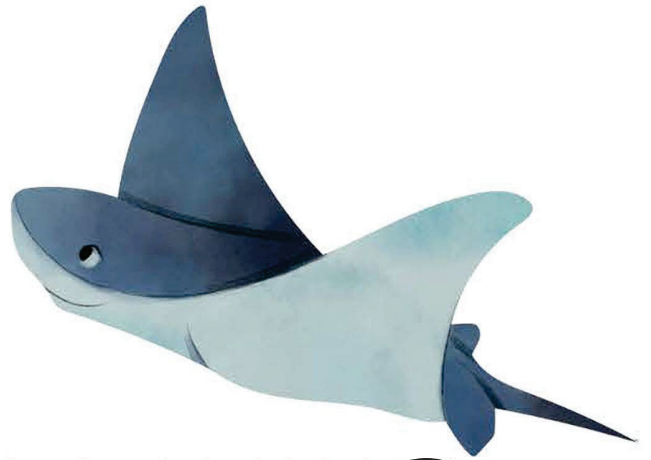


RI-CART Adolescent-Young Adult Study



RAYS

You may be eligible to participate if you:

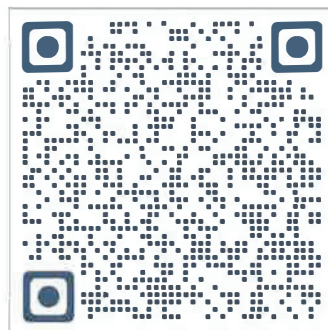
- Have a diagnosis of autism spectrum disorder or registered in RI-CART
- Are 12-24 years old (or are the parent/guardian of a 12-24 year old)
- Are verbally fluent in English or Spanish

Eligible youth/young adults can earn up to \$395 for completing the entire study and parents/guardians of eligible youth/young adults who participate can earn up to \$225.

Contact the RAYS research team at 401.444.1913 or RAYS@brown.edu to confirm if you are eligible to participate.

Brown University researchers are conducting a study examining the challenges and problems that adolescents and young adults experience over the course of adolescence and young adulthood.

The study consists mainly of interviews and filling out questionnaires on your mood, behavior, alcohol and other drug use, and relationships with family and friends. The study has 4 visits, each one year apart. The study lasts 3 years.



BROWN

Scan here to enter information for our team to contact you