

Appendix AA

- 1. Webex Virtual Interview (blue)**
- 2. Informant and Adult Survey Poster (yellow/orange)**
 - a. Adult OR loved one (full list)
 - b. Adult or loved one (1/specific dx)



Do you or a loved one have any of the following?

- social anxiety
- depression
- Tourette’s syndrome
- learning disability
- attention-deficit hyperactivity disorder
- autism



You may be eligible to participate in a study to help us understand different coping strategies if you:

- 1

Have any of the above diagnoses /neurotypes
- OR
- Have a close relationship (5+ years) with someone who does (ie. parent/guardian, sibling, romantic partner)
- 2
- Are 18 years or older
- 3
- Can independently provide consent

You would participate in a virtual Webex interview (60-90 min) with:

- A loved one if you are a neurodivergent adult
- A neurodivergent adult if you are a loved one



TO LEARN MORE AND PARTICIPATE:

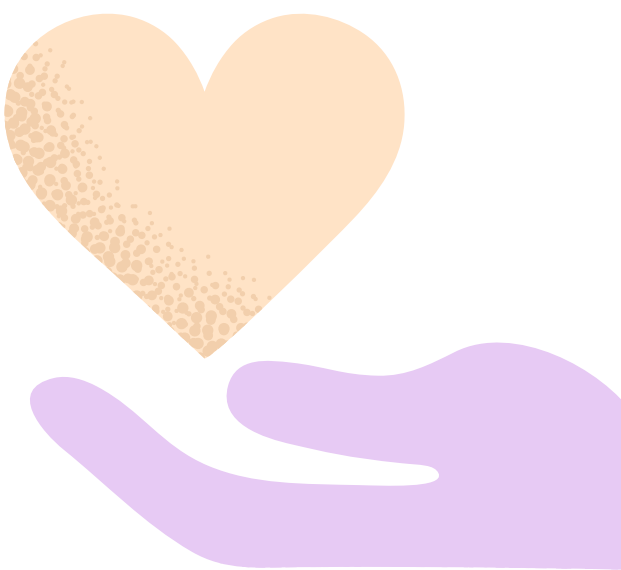
➤ Visit: <https://www.azrieli-anc.com/coping-study-webex-interviews>

Study participation is **completely voluntary**, and you will be **compensated for your time**. For more information about programs and services at CAMH, please visit www.camh.ca or call 416-535-8501 or 1-800-463-6273.



Do you or a loved one have any of the following?

- social anxiety
- depression
- Tourette’s syndrome
- learning disability
- attention-deficit hyperactivity disorder
- autism



You are eligible to participate if you:

- 1

Have any of the above diagnoses /neurotypes
- OR
- Have a **close relationship** (5+ years) with someone who does (ie. parent/guardian, sibling, romantic partner)
- 2
- Are **18 years** or **older**
- 3
- Can independently **provide consent**

You could be eligible to participate in up to 4 surveys, 30 minutes each, focusing on social coping, sensorimotor coping, academic coping & mental health coping.

TO LEARN MORE AND PARTICIPATE:

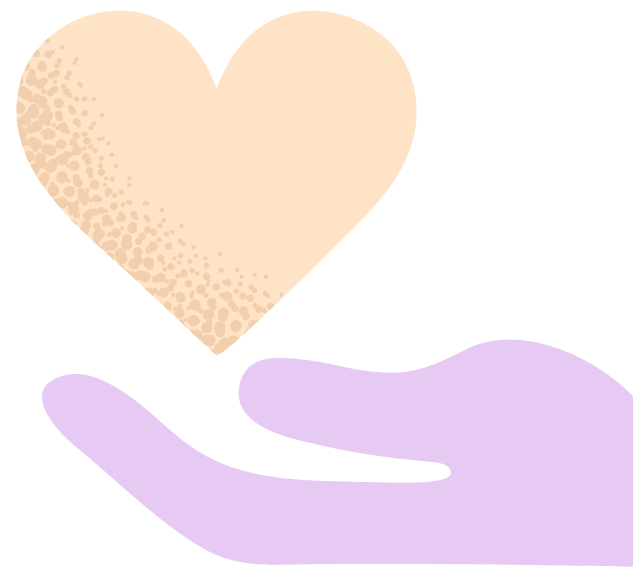


➤ **Visit:** <https://www.azrieli-anc.com/coping-study-adult-informant-survey>

The security of information sent by e-mail cannot be guaranteed. Please do not communicate personal sensitive information by e-mail.

Have you or a loved one been diagnosed with depression?

You could be eligible to participate in up to 4 surveys, 30 minutes each, focusing on social coping, sensorimotor coping, academic coping & mental health coping.



You are eligible to participate if you:

1

Have any of the above diagnoses /neurotypes

OR

Have a **close relationship** (5+ years) with **someone who does** (ie. parent/guardian, sibling, romantic partner)

2

Are **18 years** or **older**

3

Can independently **provide consent**

TO LEARN MORE AND PARTICIPATE:

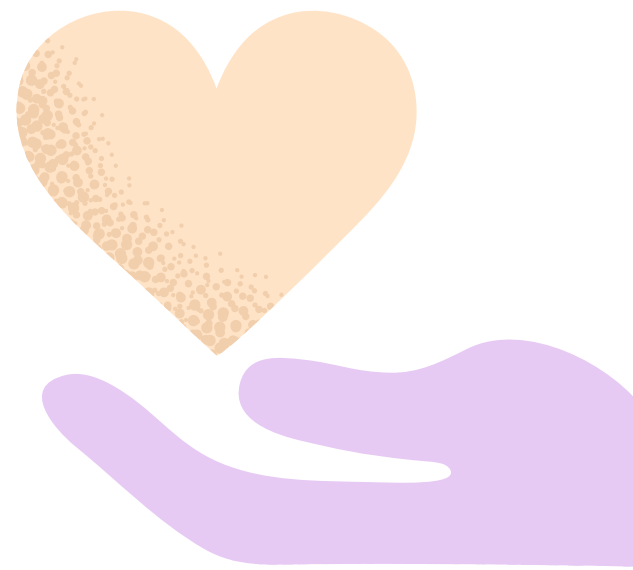
➤ **Visit:** https://www.azrieli-anc.com/coping-study-adult-informant-survey_

The security of information sent by e-mail cannot be guaranteed. Please do not communicate personal sensitive information by e-mail.



Have you or a loved one been diagnosed with social anxiety?

You could be eligible to participate in up to 4 surveys, 30 minutes each, focusing on social coping, sensorimotor coping, academic coping & mental health coping.



You are eligible to participate if you:

1

Have any of the above diagnoses /neurotypes

OR

Have a **close relationship** (5+ years) with **someone who does** (ie. parent/guardian, sibling, romantic partner)

2

Are **18 years** or **older**

3

Can independently **provide consent**

TO LEARN MORE AND PARTICIPATE:

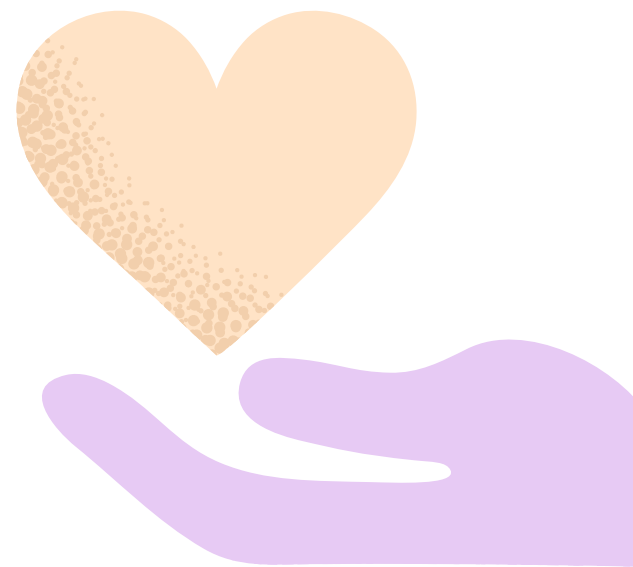
➤ **Visit:** https://www.azrieli-anc.com/coping-study-adult-informant-survey_

The security of information sent by e-mail cannot be guaranteed. Please do not communicate personal sensitive information by e-mail.



Have you or a loved one been diagnosed with Tourette's syndrome?

You could be eligible to participate in up to 4 surveys, 30 minutes each, focusing on social coping, sensorimotor coping, academic coping & mental health coping.



You are eligible to participate if you:

1

Have any of the above diagnoses /neurotypes

OR

Have a **close relationship** (5+ years) with **someone who does** (ie. parent/guardian, sibling, romantic partner)

2

Are **18 years** or **older**

3

Can independently **provide consent**

TO LEARN MORE AND PARTICIPATE:

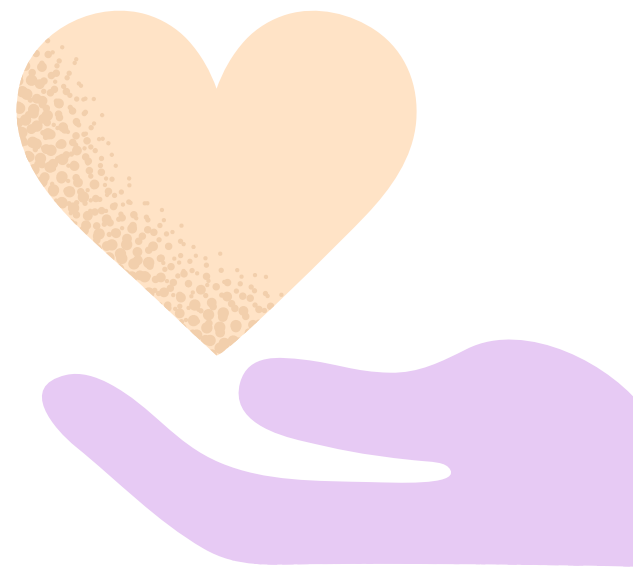
➤ **Visit:** <https://www.azrieli-anc.com/coping-study-adult-informant-survey>

The security of information sent by e-mail cannot be guaranteed. Please do not communicate personal sensitive information by e-mail.



Have you or a loved one been diagnosed with a learning disability?

You could be eligible to participate in up to 4 surveys, 30 minutes each, focusing on social coping, sensorimotor coping, academic coping & mental health coping.



You are eligible to participate if you:

1

Have any of the above diagnoses /neurotypes

OR

Have a **close relationship** (5+ years) with **someone who does** (ie. parent/guardian, sibling, romantic partner)

2

Are **18 years** or **older**

3

Can independently **provide consent**

TO LEARN MORE AND PARTICIPATE:

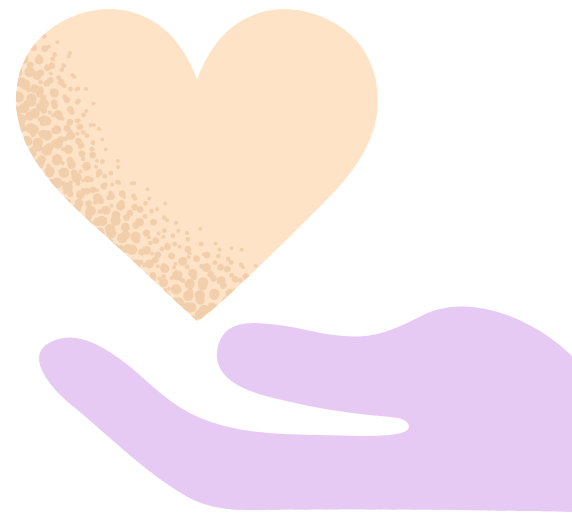
➤ **Visit:** <https://www.azrieli-anc.com/coping-study-adult-informant-survey>

The security of information sent by e-mail cannot be guaranteed. Please do not communicate personal sensitive information by e-mail.



Have you or a loved one been diagnosed with attention-deficit hyperactivity disorder (ADHD)?

You could be eligible to participate in up to 4 surveys, 30 minutes each, focusing on social coping, sensorimotor coping, academic coping & mental health coping.



You are eligible to participate if you:

1

Have any of the above diagnoses /neurotypes

OR

Have a **close relationship** (5+ years) with **someone who does** (ie. parent/guardian, sibling, romantic partner)

2

Are **18 years** or **older**

3

Can independently **provide consent**

TO LEARN MORE AND PARTICIPATE:

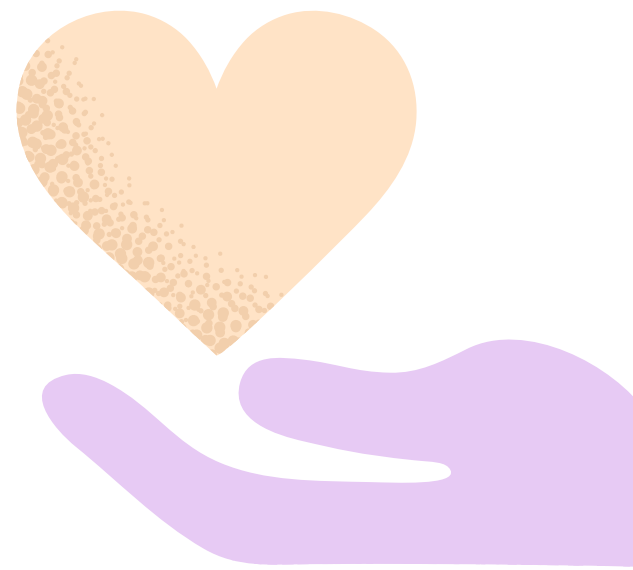
➤ **Visit:** <https://www.azrieli-anc.com/coping-study-adult-informant-survey>

The security of information sent by e-mail cannot be guaranteed. Please do not communicate personal sensitive information by e-mail.



Are you or a loved one been diagnosed with autism?

You could be eligible to participate in up to 4 surveys, 30 minutes each, focusing on social coping, sensorimotor coping, academic coping & mental health coping.



You are eligible to participate if you:

1

Have any of the above diagnoses /neurotypes

OR

Have a **close relationship** (5+ years) with **someone who does** (ie. parent/guardian, sibling, romantic partner)

2

Are **18 years** or **older**

3

Can independently **provide consent**

TO LEARN MORE AND PARTICIPATE:

➔ **Visit:** https://www.azrieli-anc.com/coping-study-adult-informant-survey_

The security of information sent by e-mail cannot be guaranteed. Please do not communicate personal sensitive information by e-mail.

